

Locality.—Station 50, off Nova Scotia; lat. $42^{\circ} 8' N.$, long. $63^{\circ} 39' W.$; depth, 1250 fathoms.

Remarks.—The name is given in honour of the deceased naturalist, v. Willemoes Suhm, who during the voyage made the rough sketch, here reproduced, of this interesting animal. The drawing is said to be magnified to double the size of the specimen, but seems to be rather in excess of that. The species appears to come near to *Lanceola*

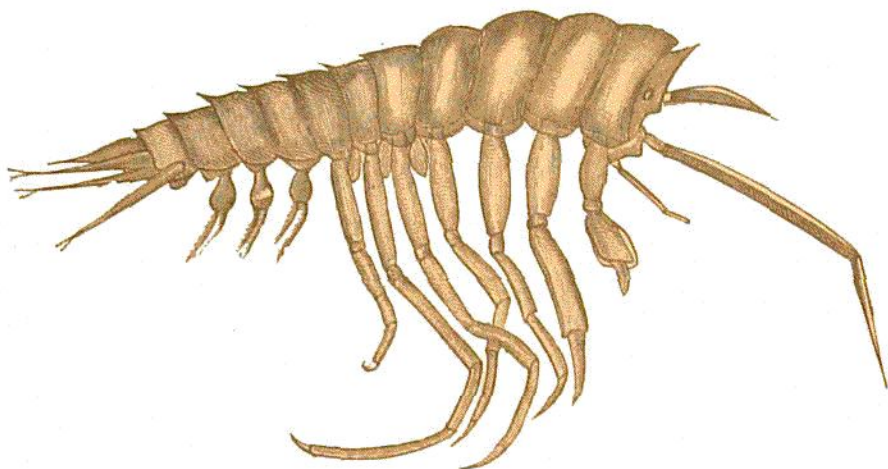


FIG. 28.—*Lanceola suhmi*, n. sp., from a drawing by the late Dr. R. v. Willemoes Suhm.

serrata, Bovallius, "from the mouth of Davis Strait," but in that species the pleon is said to be shorter than half the peræon with the head, and the segments of the peræon are said to be smooth, only the segments of the pleon being mentioned as forming a serrated keel.

Lanceola australis, n. sp.

Head forming an obtuse angle in front, without rostrum; the whole dorsal line of the animal angled; the seventh segment of the peræon has the dorsal line produced backwards in a very small tooth; each of the first three segments of the pleon has a similar but rather larger tooth.

Eyes very small, projecting a little from the surface of the head.

Upper Antennæ as in *Lanceola æstiva*, but with the large flagellum joint more strongly curved.

Lower Antennæ similar to those of *Lanceola æstiva*, but showing no minute apical joints.

Mandibles not very different from those of *Lanceola æstiva*; the tooth on the lower margin behind the cutting edge very minute; the inner groove or ridge extending with sinuous outline from the rear of the cutting plates for almost the whole length of the trunk; the second joint of the palp without setæ at the distal end, not very much longer than the third joint.