

“ At Japan, Brachyura were collected at several different localities, but among them are few novelties or species of special interest; I need only refer to the Land-crab *Telphusa (Geotelphusa) dehaani*, White, which was taken at Hakoui at an elevation of 2500 feet above the sea level, and occurred also at Kobe and near Lake Biva. Its occurrence at this remarkable elevation has already been alluded to by Mr. Moseley.<sup>1</sup>

“ The Brachyura collected at the Sandwich Islands (Hilo and Honolulu) and Society Islands (Tahiti) require no special mention. None were taken at Juan Fernandez, where the ship remained for two or three days.

“ *Chili, Magellan Strait, and Falkland Islands.*—At Valparaiso, Chili, the only crabs taken were the well-known *Cancer longipes*, Bell, *Leptograpsus variegatus* (Fabr.).

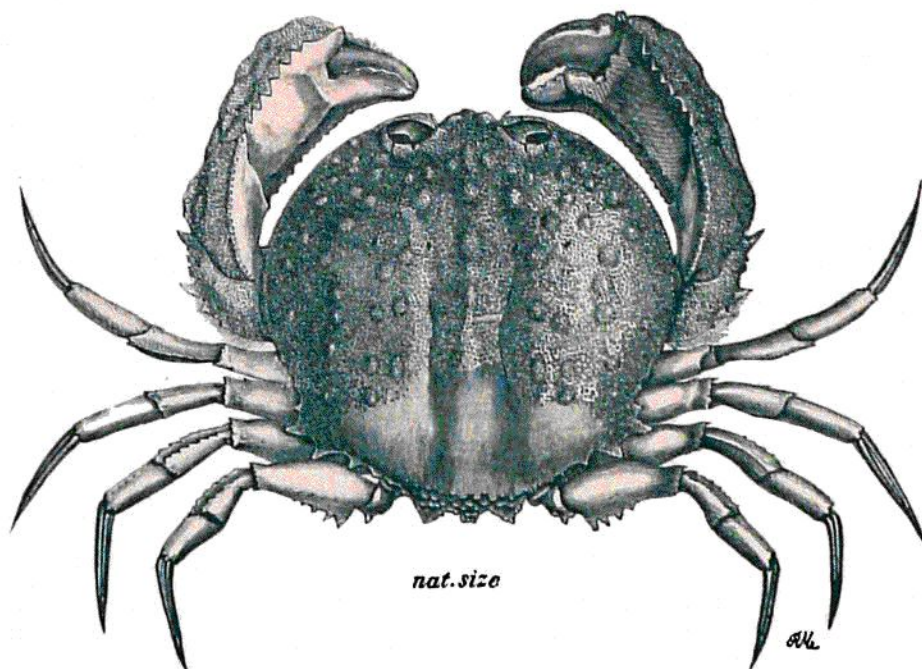


FIG. 108.—*Paracyclois milne-edwardsi*, n. gen. et sp.

and *Acanthocycclus gayi*, M.-Edw. and Lucas, which occurred also on the coast of Chiloe in fresh water. Off the coast of Chiloe occurred also two apparently new species of the Maioid genus *Libinia*, the first, *Libinia smithi*, taken at Station 311 in 245 fathoms, is characterised by the great length of the spines of the dorsal surface of the carapace, of which there are four in a longitudinal and median series, and three on each branchial region, one (the lateral spine) extremely long; the second (*Libinia gracilipes*), was dredged at Station 304 in 45 fathoms; and an *Eurypodius (Eurypodius longirostris)*, which I have regarded as new, but which may possibly be a deep-water variety of *Eurypodius latreillei*. It is distinguished by the elongated and remarkably reflexed

<sup>1</sup> Notes by a Naturalist on the Challenger, p. 561, London, 1879.